

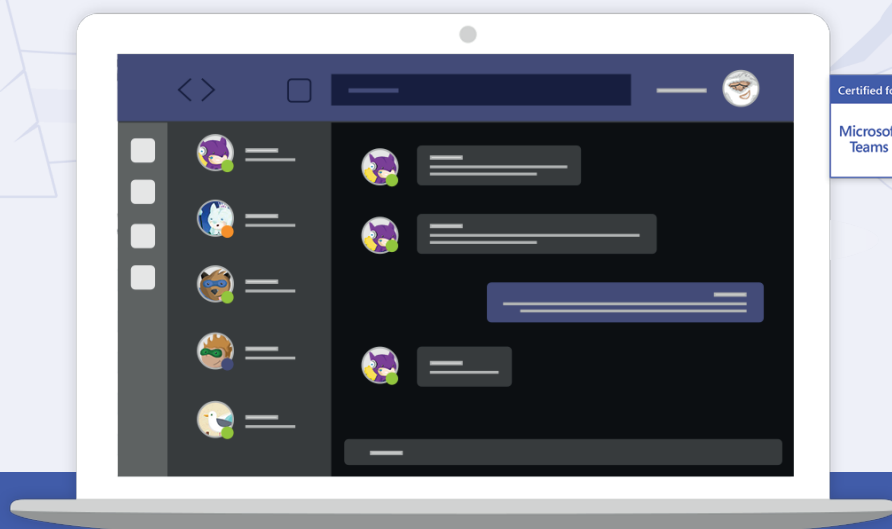
# senso.



## Remote Monitoring and Management

# Senso for Microsoft Teams

Monitor Microsoft Teams' chat for inappropriate messages and images using A.I based visual threat detection engine.



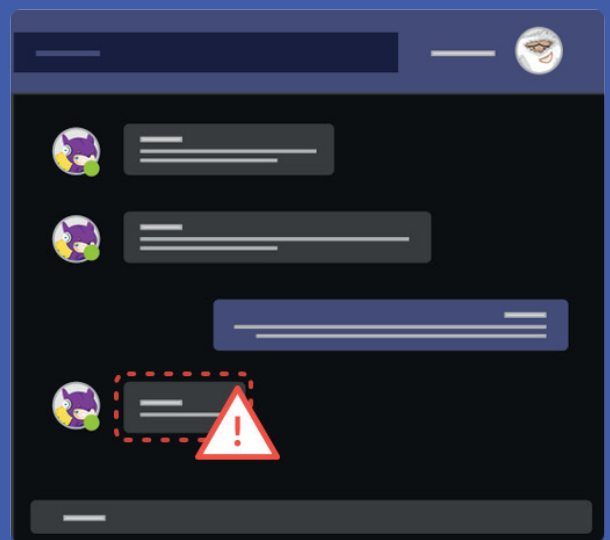
## Monitor Microsoft Teams' Chat

### SEAMLESS INTEGRATION

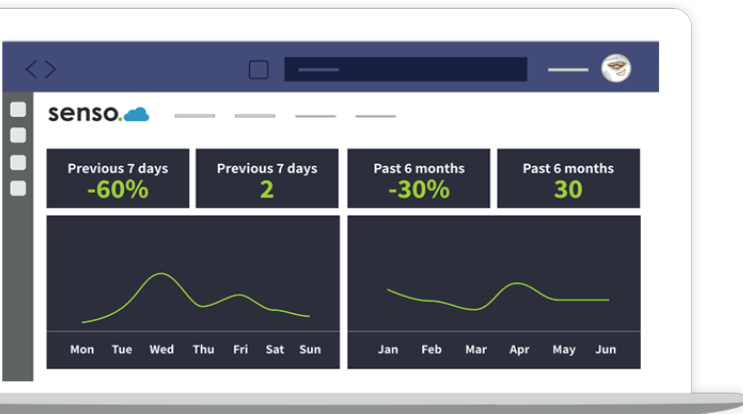
Senso's safeguarding cloud software unobtrusively integrates with Microsoft Teams' chat, giving safeguarder's access to alerts through the Teams app or within the safeguarding logs within the Senso platform.

### KEYWORDS AND IMAGES

Senso will monitor chat messages and inspect images for visual threats using Senso's Artificial Intelligence (AI) and keyword algorithms that are focused on user safety, then raise an alert when a violation is detected.



## Safeguarding Data and Statistics



### DASHBOARD

Gain a clear insight of violations made within Microsoft Teams' chat. Graphs and statistics help to breakdown the number of violations and alerts made over time.

### DATA AND TRENDS

Graphs and statistics help in visualising violations made, allowing you to react to trends and pinpoint issues before they become a reoccurring problem.

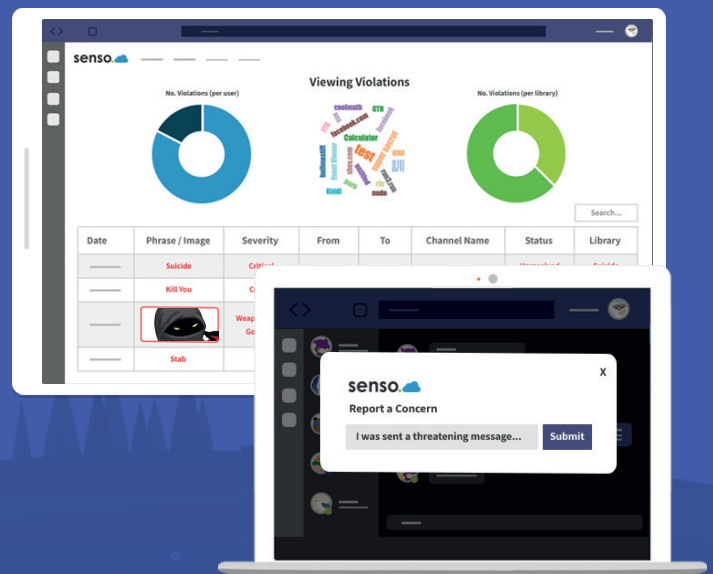
## Violations and Reporting Users

### VIEWING VIOLATIONS

Senso alerts you to users who have sent inappropriate messages or images within Microsoft Teams and logs the date, severity, and channel name, so you can manage the situation.

### REPORT A CONCERN

Senso helps in safeguarding staff and students with the 'report a concern' feature, allowing users to report anything that has caused them concern directly from Teams.



## Agentless Safeguarding Software

### COMPLETELY AGENTLESS

Senso's safeguarding software is agentless, meaning there is no software to install. It works at school, home or on the go regardless of the device. I.e. mobile phone and personal devices. Our cloud based software runs seamlessly within your teams tenancy with automatic updates making distance learning safer and more resilient for the future.